

## Spring Loaded Pressure Maintaining Valve

L08 is a 5mm spring loaded pressure maintaining valve, used for quick and accurate control of inlet pressures.

Ideal for low, medium and high pressure applications.

It is manually adjustable for maintaining a set pressure of upstream media.



### Standard Features

**Valve Size:**

- 5mm

**Materials of construction:**

- BODY - ALUMINIUM - L168-T6511
- VALVE - STAINLESS STEEL - BS EN 10088 1.4305
- SEAT - ARLON 1000
- ELASTOMERS - HIGH NITRILE

**Connections:**

- 1/2" BSPP (INLET & OUTLET)

**Maximum Inlet Pressure:**

- 420 BAR (6092 PSI)

**Set Pressure Range:**

- 10 - 400 BAR (145 - 5820 PSI)

**Media:**

- GASES

**Weight:**

- 2.3 - 2.5 Kg (5 - 5.5 lb)

### Additional Features

- BASE MOUNTING
- PANEL MOUNTING BRACKET
- ADJUSTABLE SET PRESSURE

### Options

**Materials of construction:**

- BODY - STAINLESS STEEL - BS EN 10088 1.4401
- ELASTOMERS - FLUOROCARBON OR EPDM REQUEST

**Connections:**

- 3/8" BSPP (INLET & OUTLET)
- 1/2" OR 3/8" NPT (INLET & OUTLET)

## Applications

- Compressors
- Dryer systems
- Filter systems
- Cylinder filling
- Brewery plants

## Ordering Information

TYPE	VALVE SEAT SIZE	MATERIAL OPTION	CONNECTIONS	OUTLET PRESSURE	ELASTOMER
L08	B (5mm)	A9 (ST. STL.) T0 (ALUMINIUM)	E2 (1/2" BSPP) E3 (3/8" BSPP)	1(10-150 BAR) 4(150 - 270 BAR)	N (NITRILE) V (FLUOROCARBON) E (EPDM)

ORDERING INFORMATION EXAMPLE:

L08BA9E24V

## Notes

## Technical Specifications

## Pressure

	PRESSURE
TEST (PROOF) PRESSURE	630 BAR (9137 PSI)
MAXIMUM INLET PRESSURE	420 BAR (6090 PSI)

## Inlet Reduced Pressure Ranges

PRESSURE
10 - 150 BAR (145 - 2175 PSI)
150 - 270 BAR (2175 - 3915 PSI)
270 - 400 BAR (3915 - 5800 PSI)

## Leakage

STANDARD ON REQUEST	BUBBLE TIGHT (TYPICALLY 10 <sup>-6</sup> AT CM <sup>3</sup> SEC <sup>-1</sup> ) HELIUM LEAK TESTED TO 10 <sup>-8</sup> AT CM <sup>3</sup> SEC <sup>-1</sup>
------------------------	--

## Temperature Range

	TEMPERATURE	BODY MATERIAL
STANDARD	-10°C TO +100°C	ALL
OPTION	-40°C TO +150°C	CONSULT IVP

## Valve Size and Flow Area

NOMINAL SIZE	5mm (3/8")
ORIFICE AREA A1	19mm <sup>2</sup> (0.029 in <sup>2</sup> )
PORT AREA A2	63mm <sup>2</sup> (0.098in <sup>2</sup> )
FLOW COEFFICIENT	Kv = 0.56 (Cv = 0.66)

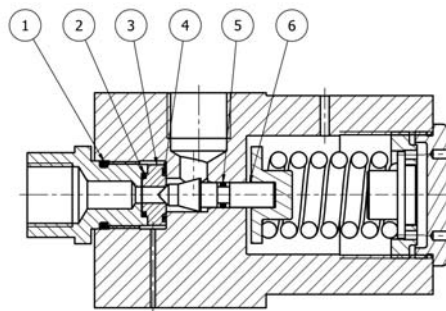
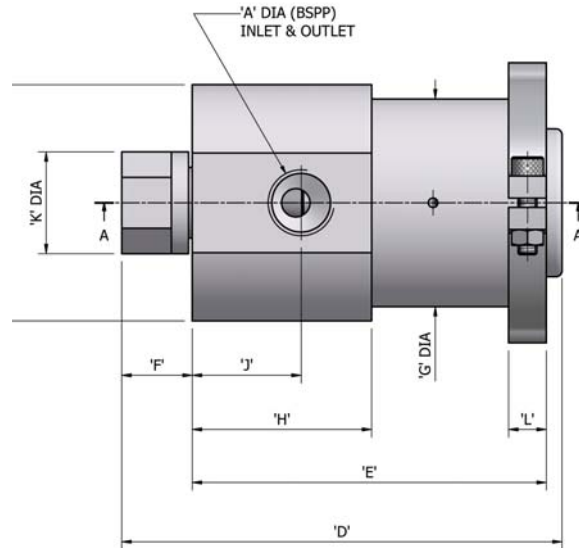
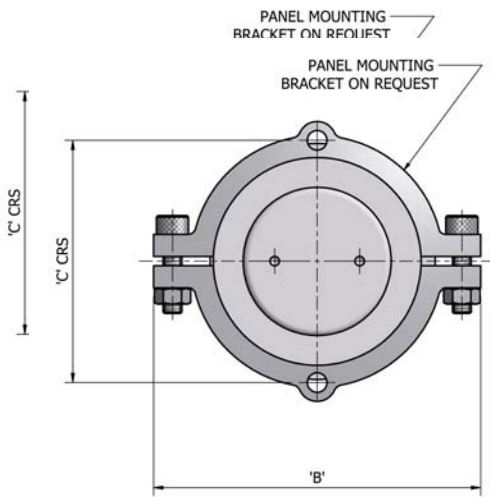
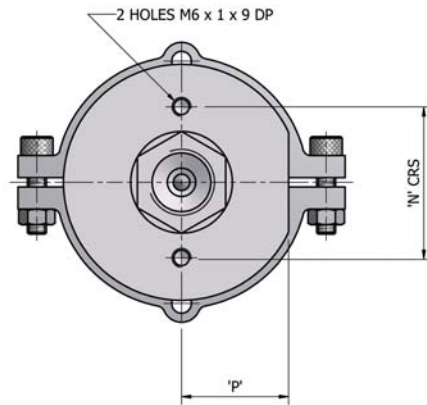
## Spares Code

SPARES	ELASTOMER
L08S	<b>N</b> (NITRILE) <b>V</b> (FLUOROCARBON) <b>E</b> (EPDM)

## Spares BOM

ITEM	DESCRIPTION	MATERIAL	QTY
1	'O' RING	Rubber	1
2	'O' RING	Rubber	1
3	SEAT	Peek	1
4	'O' RING	Rubber	1
5	'O' RING	Rubber	1
6	VALVE	BS EN 10088 1.4401	1

## Technical Specifications



SECTION VIEW 'A-A'  
MOUNTING BRACKET REMOVED

## Dimensions

'A'	'B'	'C'	'D'	'E'	'F'	'G'	'H'	'J'	'K'	'L'	'M'	'N'	'P'	WEIGHT
1/2"	104	77	140	113	22.5	66	57	34.5	33	12	75	48	34	2,5 Kg
3/8"	104	77	135	113	17	66	54	34.5	33	12	66	48	30	2.3 Kg