

Maxseal Instrumentation Valves



QEV
1/4" - 1/2"
AUTO



Typical Applications

- 1/4" - 1/2" Process Connections
- Automatic operation
- Instrument Air, Benign Gases, Inert Gas and Sweet Gases

Thompson Valves Ltd

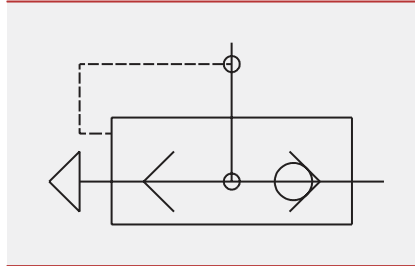
Description

- Model QEV 1/4" - 1/2" AUTO
- Quick Exhaust Valve
- High flow capability
- Inlet pressure 0.5 - 12 bar (7.2 - 174 psi)
- A convenient stainless steel exhaust valve for systems handling a variety of gases
- Reliable and long life, ideal for a one time installation

Technical Specifications

<input type="checkbox"/> Inlet Pressure Range	<input type="checkbox"/> QEV 1/4" and QEV 1/2": 0.5 - 12.0 bar
<input type="checkbox"/> Test (Proof) Pressure	<input type="checkbox"/> 18 bar
<input type="checkbox"/> Bore Size	<input type="checkbox"/> 1/4" (7 mm) or 1/2" (15 mm)
<input type="checkbox"/> Process Connections	<input type="checkbox"/> 1/4" NPT or 1/2" NPT <input type="checkbox"/> 1/4" BSPP or 1/2" BSPP
<input type="checkbox"/> Number of Ports	<input type="checkbox"/> Inlet, Outlet and Exhaust
<input type="checkbox"/> Operation	<input type="checkbox"/> Automatic
<input type="checkbox"/> Materials of Construction QEV 1/4" and 1/2"	<input type="checkbox"/> Seal: Nitrile (NBR) <input type="checkbox"/> Seat: Nitrile (NBR) <input type="checkbox"/> Body: 316 Stainless Steel (unpainted)
<input type="checkbox"/> Media Temperature Rating QEV 1/4" and 1/2"	<input type="checkbox"/> Media and Ambient: -50 to +90°C
<input type="checkbox"/> Flow Rates QEV 1/4"	<input type="checkbox"/> Inlet to outlet: CV = 1.6 USgpm for 1 psi Δp KV = 23 l/min for 1 bar Δp Outlet to Exhaust: CV = 2.1 USgpm for 1 psi Δp KV = 30 l/min for 1 bar Δp
<input type="checkbox"/> Flow Rates QEV 1/2"	<input type="checkbox"/> Inlet to outlet: CV = 6.4 USgpm for 1 psi Δp KV = 92 l/min for 1 bar Δp Outlet to Exhaust: CV = 5.5 USgpm for 1 psi Δp KV = 80 l/min for 1 bar Δp
<input type="checkbox"/> Media	<input type="checkbox"/> Instrument air, benign gases, inert gas and sweet gases Media must be clean and dry with a dew point of less than -50°C
<input type="checkbox"/> Weight	<input type="checkbox"/> QEV 1/4": 0.30 kg QEV 1/2": 0.50 kg
<input type="checkbox"/> ATEX Classification	<input type="checkbox"/> Ex11 2GD Exc: Complies with EN 13463 for Non-Electrical Equipment

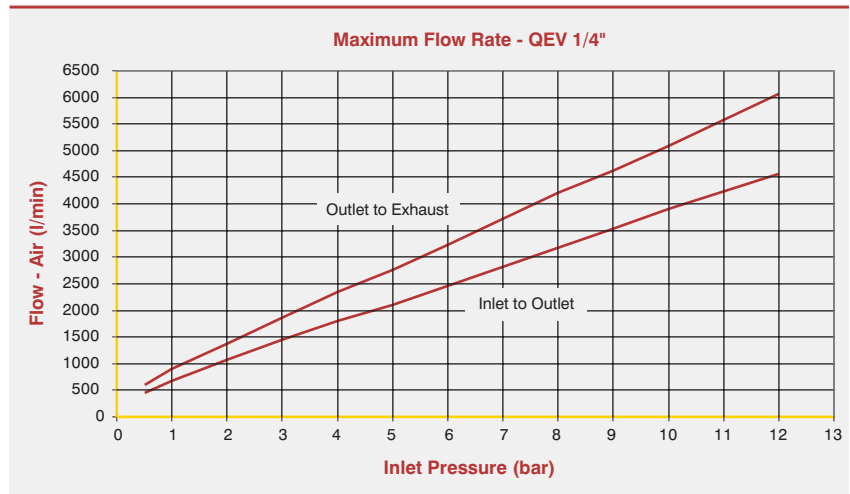
Valve Symbol



Flow Rates

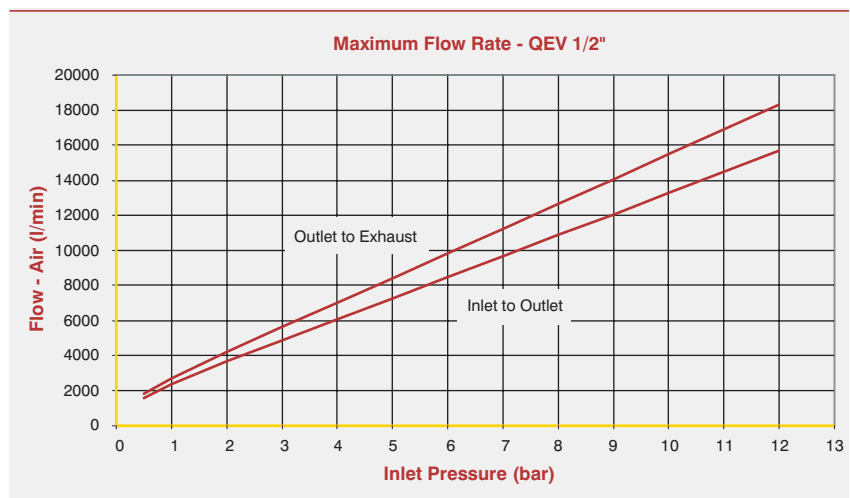
Outlet to Exhaust:
CV = 2.1 USgpm
for 1 psi Δp

Inlet to outlet:
CV = 1.6 USgpm
for 1 psi Δp



Outlet to Exhaust:
CV = 5.5 USgpm
for 1 psi Δp

Inlet to outlet:
CV = 6.4 USgpm
for 1 psi Δp



Ordering Information

Model	Inlet Pressure	Port Config.	Operation	Process Conn. Type	Seat/Seal Materials	Unique Identifier	Body Materials
QEV	1	3	A	A1	H	00	S
QEV = Quick Exhaust Valve	1 = 0.5 - 12.0 bar (7.2 - 174.0 psi)	3 = Inlet, Outlet & Exhaust	A = Automatic	A1 = 1/4" NPT E1 = 1/4" BSPP A3 = 1/2" NPT E3 = 1/2" BSPP	H = Nitrile/Nitrile		S = 316 SS

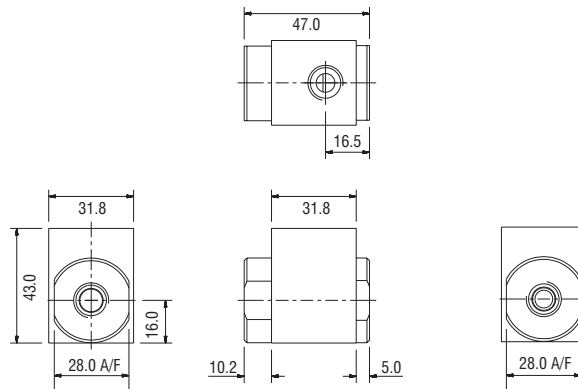
Ordering Example

QEV	1	3	A	A1	H	00	S
	0.5 - 12.0 bar	I O & E	Auto	1/4" NPT	Nitrile/Nitrile		316SS

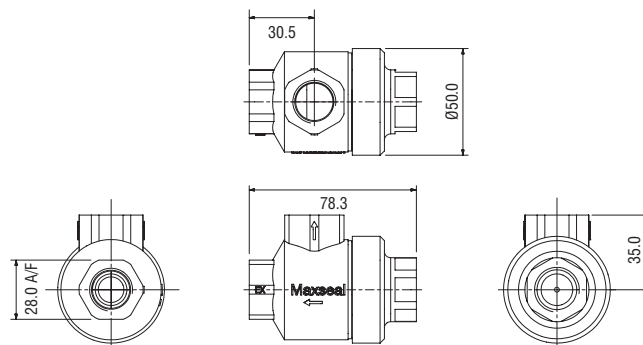
Profile and Dimensions (mm)

3rd angle projection

Maxseal 1/4" QEV



Maxseal 1/2" QEV



Thompson Valves reserves the right to amend product specifications or designs without notice. Information is given in good faith and no liability can be accepted for error or omission.